



2 Bed Cottage

Chevin Green Farm
Chevin Road
Belper
DE56 2UN

£1,200 Per Calendar Month

Fletcher
& Company

Chevin Green Farm Chevin Road Belper DE56 2UN



- Two Bed Cottage in a Stunning Location • Fully Furnished • Lounge with Countryside Views • Council Tax Band B • Private Garden • Available Now • Allocated Parking • A Superb Place To Relax • Great Road Network Surrounding With Quick Access To 'A' Roads • Viewings Available Immediately

AVAILABLE IMMEDIATELY & FULLY FURNISHED

This charming 2-bedroom house can be your perfect new home. Offering a sought after location, breathtaking countryside views, and a private garden, this property offers a comfortable and relaxing lifestyle for you to enjoy.

Step inside this lovely house to find a fully fitted kitchen, providing ample space for culinary creations and equipped with modern appliances. The separate lounge boasts stunning views over the adjacent countryside, offering you a peaceful sanctuary to unwind and enjoy the beauty of nature.

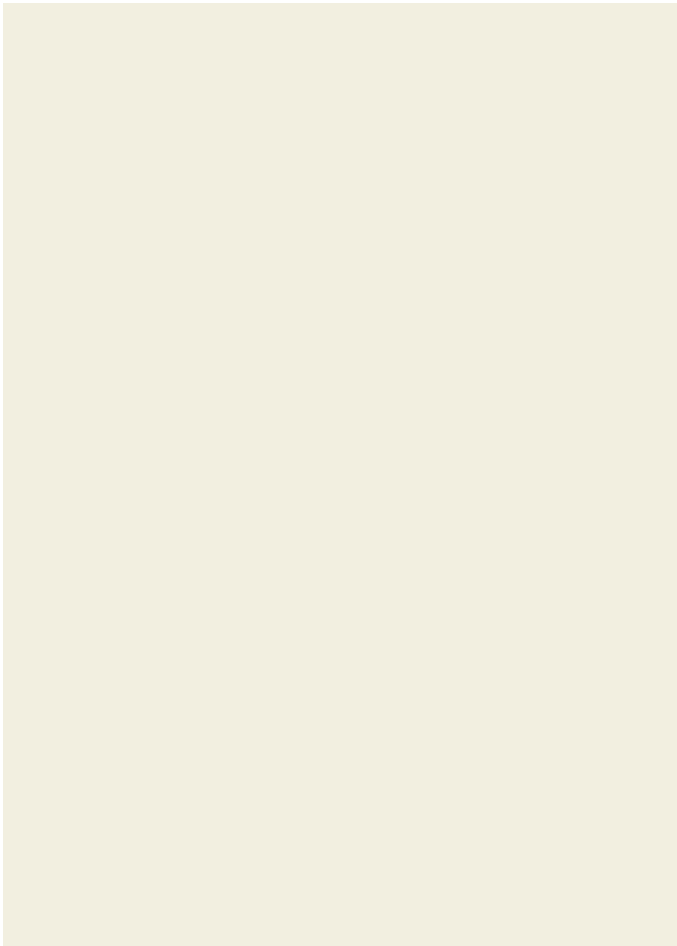
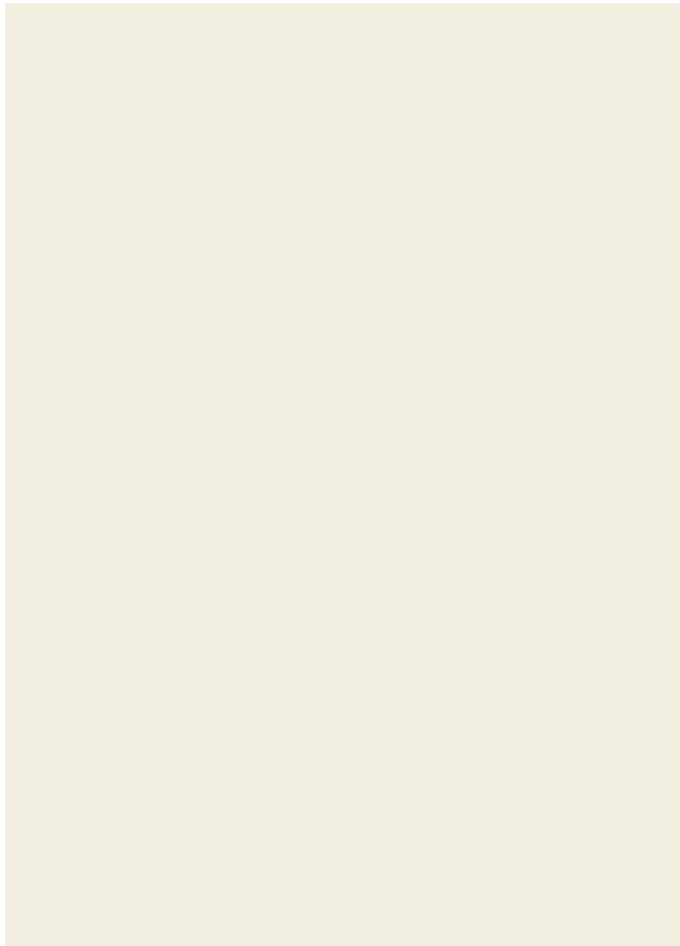
The property also features a dining room, perfect for hosting gatherings and entertaining friends and family. With its bright and airy ambience, this space is ideal for creating cherished memories and bonding moments.

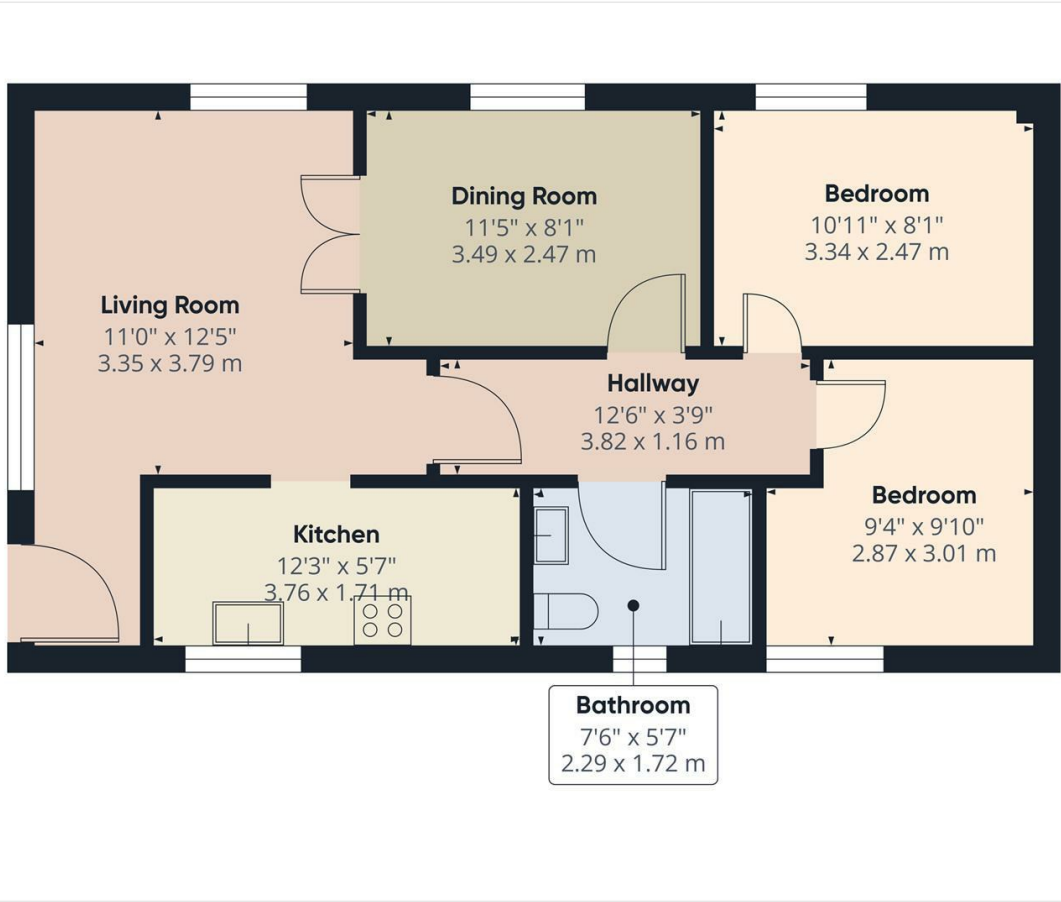
The house comprises a double bedroom, featuring ample space for your comfort and storage needs. Drift into a peaceful slumber every night, enveloped by the tranquility of the surroundings. The white bathroom suite with a shower-over-bath guarantees relaxation and convenience, allowing you to enjoy refreshing moments after a long day.

This stunning house also presents a small private garden, providing you with an outdoor haven to enjoy fresh air and bask in the beauty of nature. Whether you prefer gardening, having a barbeque, or simply lounging in the sunshine, this private oasis is yours to nurture and enjoy.

To ensure your convenience, the property comes with a car parking space, eliminating the stress of finding parking in a sought after area like Belper.







Approximate total area⁽¹⁾
594 ft²
55.2 m²

(1) Excluding balconies and terraces

While every attempt has been made to ensure accuracy, all measurements are approximate, not to scale. This floor plan is for illustrative purposes only.

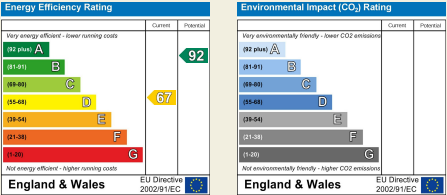
Calculations are based on RICS IPMS 3C standard.

GIRAFFE360

Duffield House
Town Street
Duffield
Derbyshire
DE56 4GD

T: 01332 843390

E: duffield@fletcherandcompany.co.uk
www.fletcherandcompany.co.uk



These particulars do not constitute an offer or a contract neither do they form part of an offer or contract. The vendor does not make or give and Messrs. Fletcher & Company nor any person employed has any authority to make or give any representation or warranty, written or oral, in relation to this property. Whilst we endeavour to make our sales details accurate and reliable, if there is any point which is of particular importance to you, please contact the office and we will be pleased to check the information for you, particularly if contemplating travelling some distance to view the property. None of the services or appliances to the property have been tested and any prospective purchasers should satisfy themselves as to their adequacy prior to committing themselves to purchase.

Fletcher
& Company